

MOSAI: Model and Observation for Surface-Atmosphere Interactions

Objective:

Use of long term measurements to highlight weaknesses of surface-atmosphere interactions schemes in numerical models.

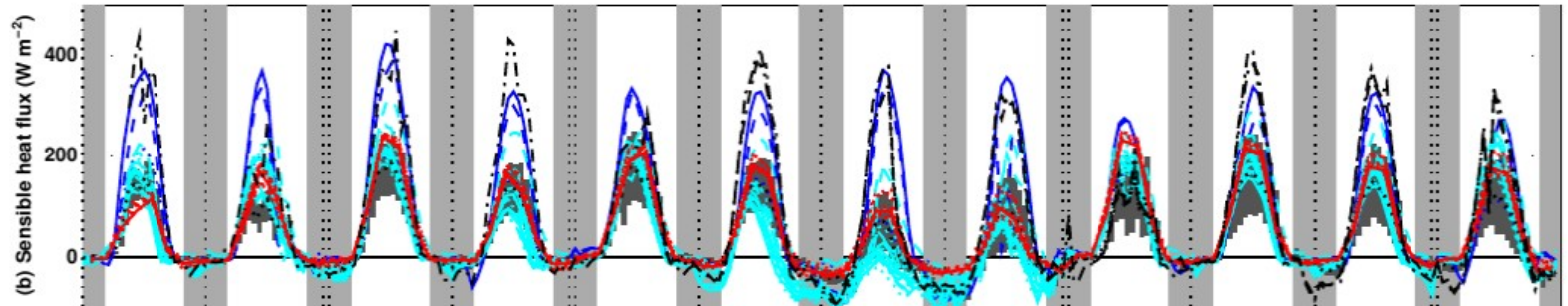
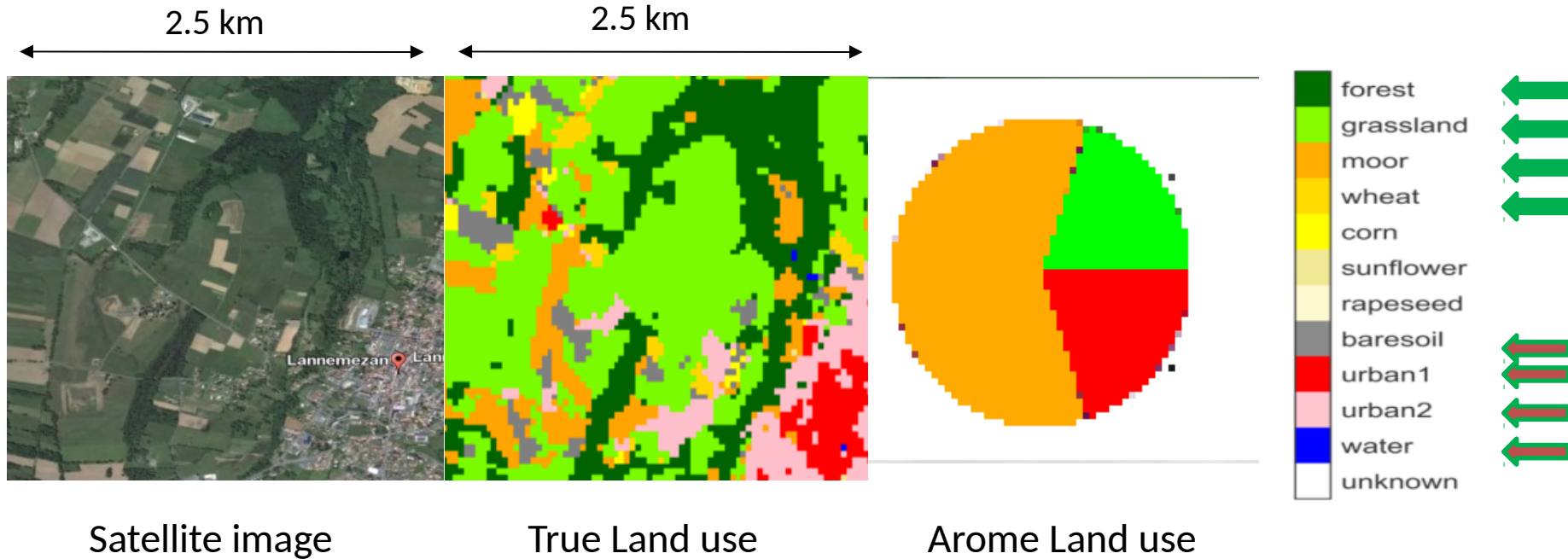
Link between Experiment and Modeling communities

On-building Project



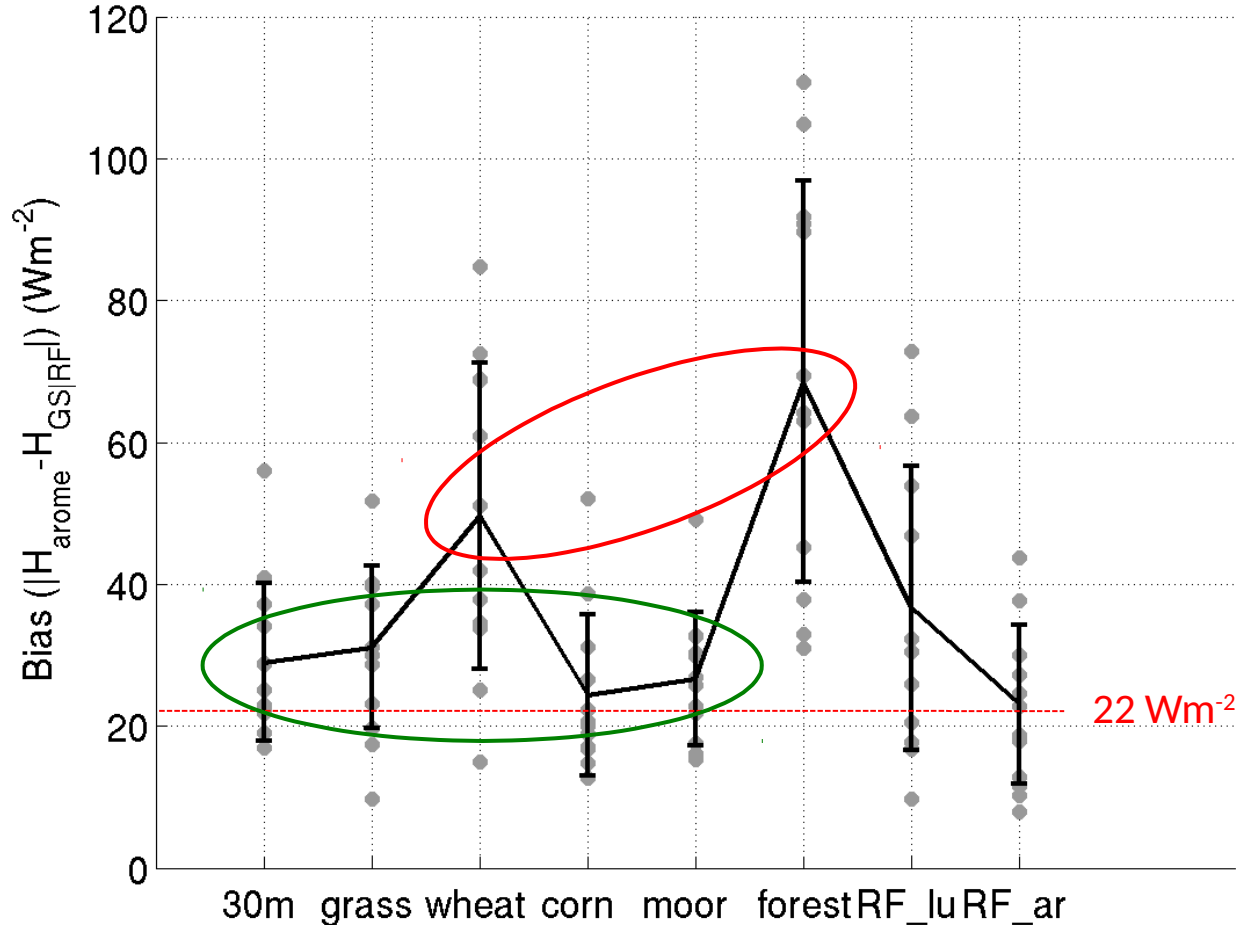
- ✓ Motivations
- ✓ Objectives
- ✓ Partners
- ✓ Field campaigns
- ✓ Scheduling

Motivations



Couvreux et al. 2015

Motivations



- **scarse vegetation covers over AROME Land Use**
- **main vegetation covers over Arome Land Use**

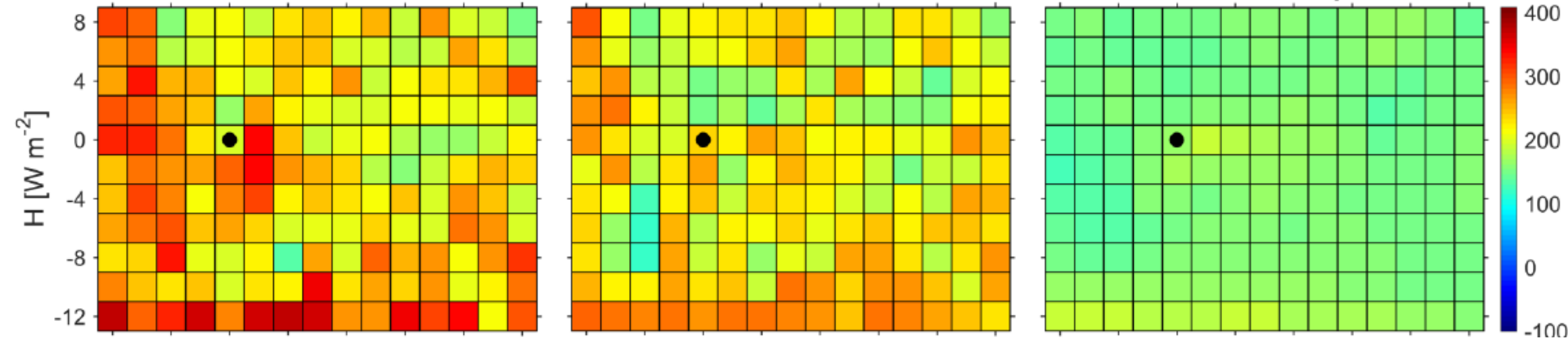
Motivations

MESO-NH - 25June-IOP5 - 12:00

Measurements on True-LU

Measurements on MESONH-LU

MESO-NH output

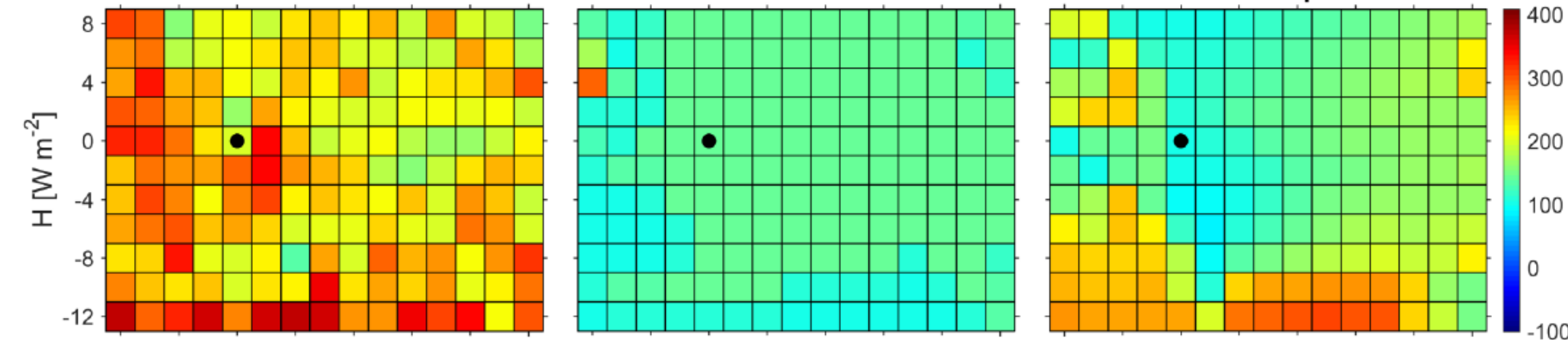


WRF - 25June-IOP5 - 12:00

Measurements on True-LU

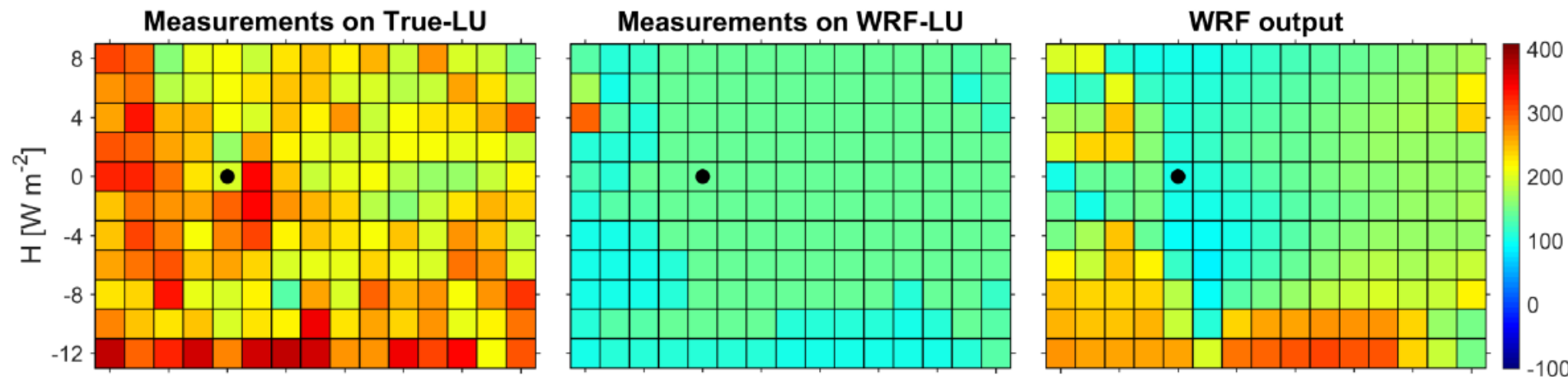
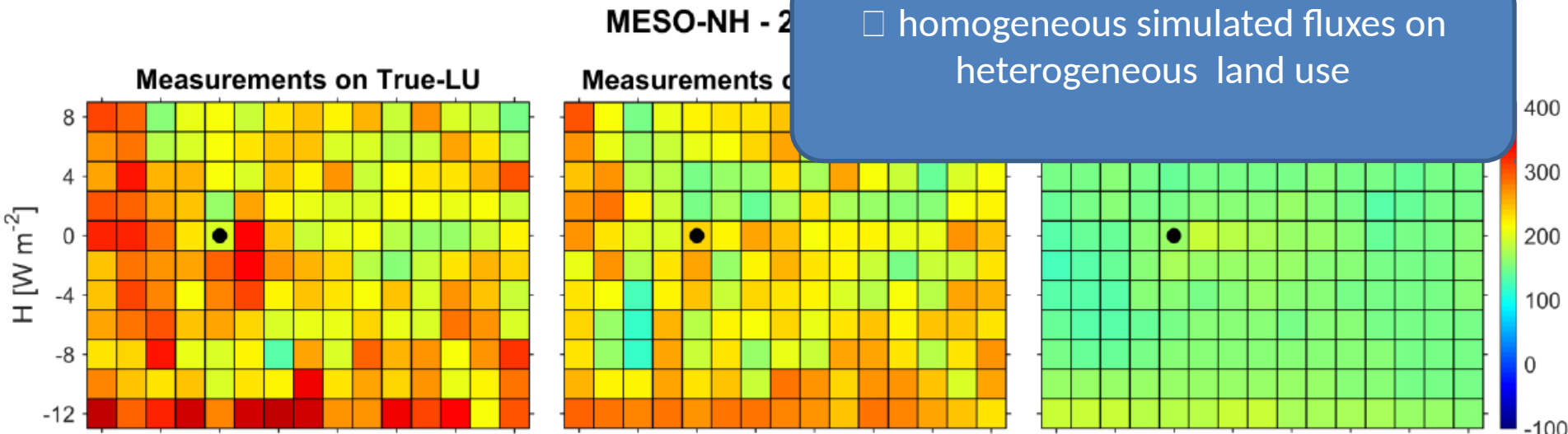
Measurements on WRF-LU

WRF output

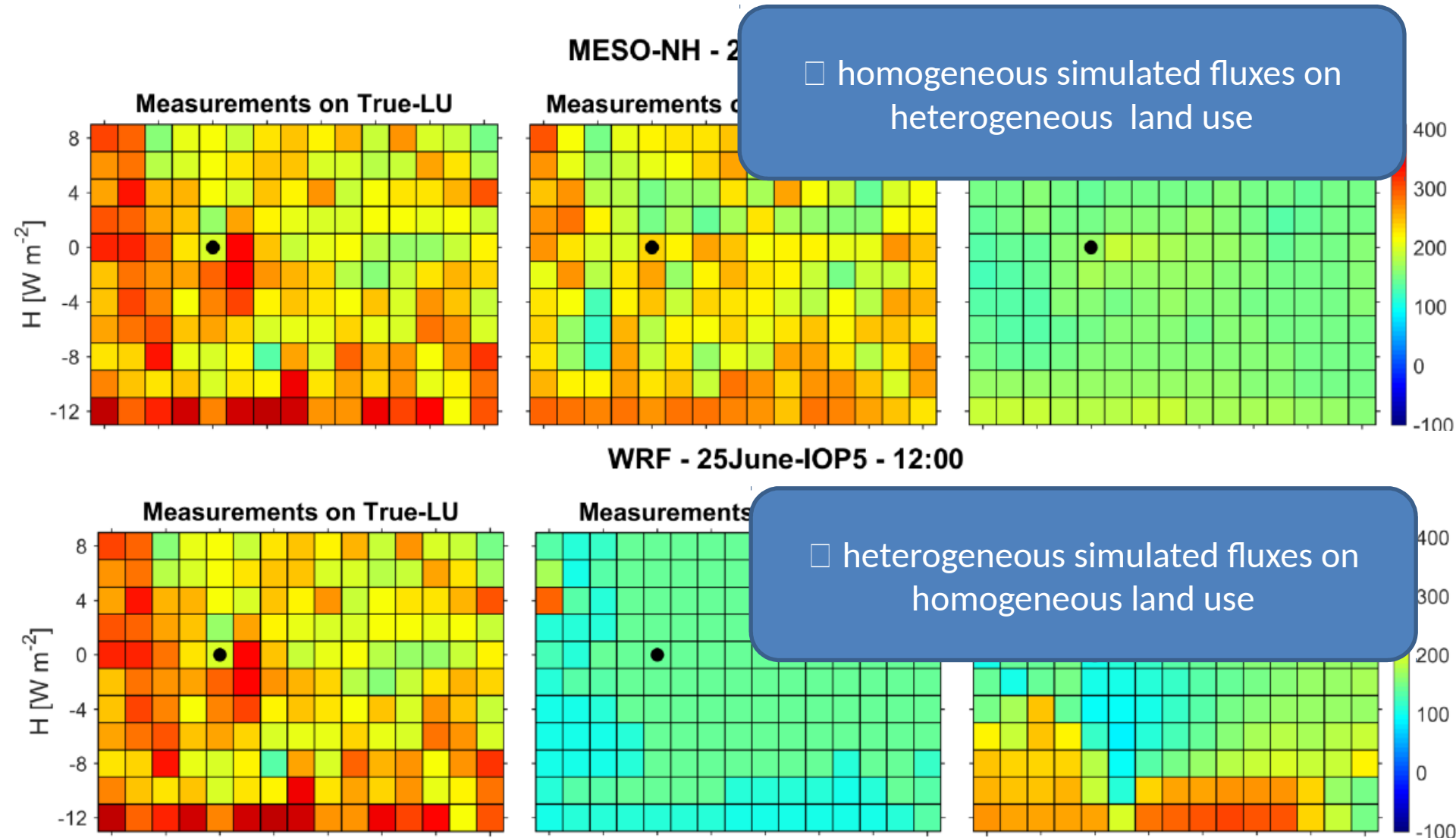


Motivations

□ homogeneous simulated fluxes on heterogeneous land use



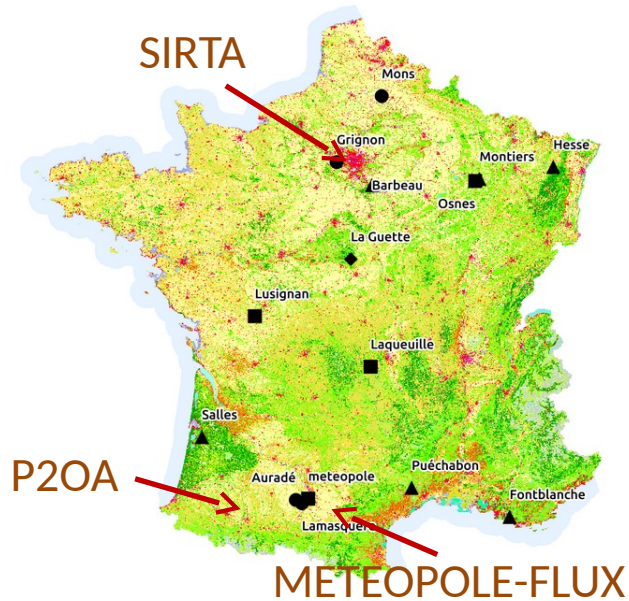
Motivations



Motivations

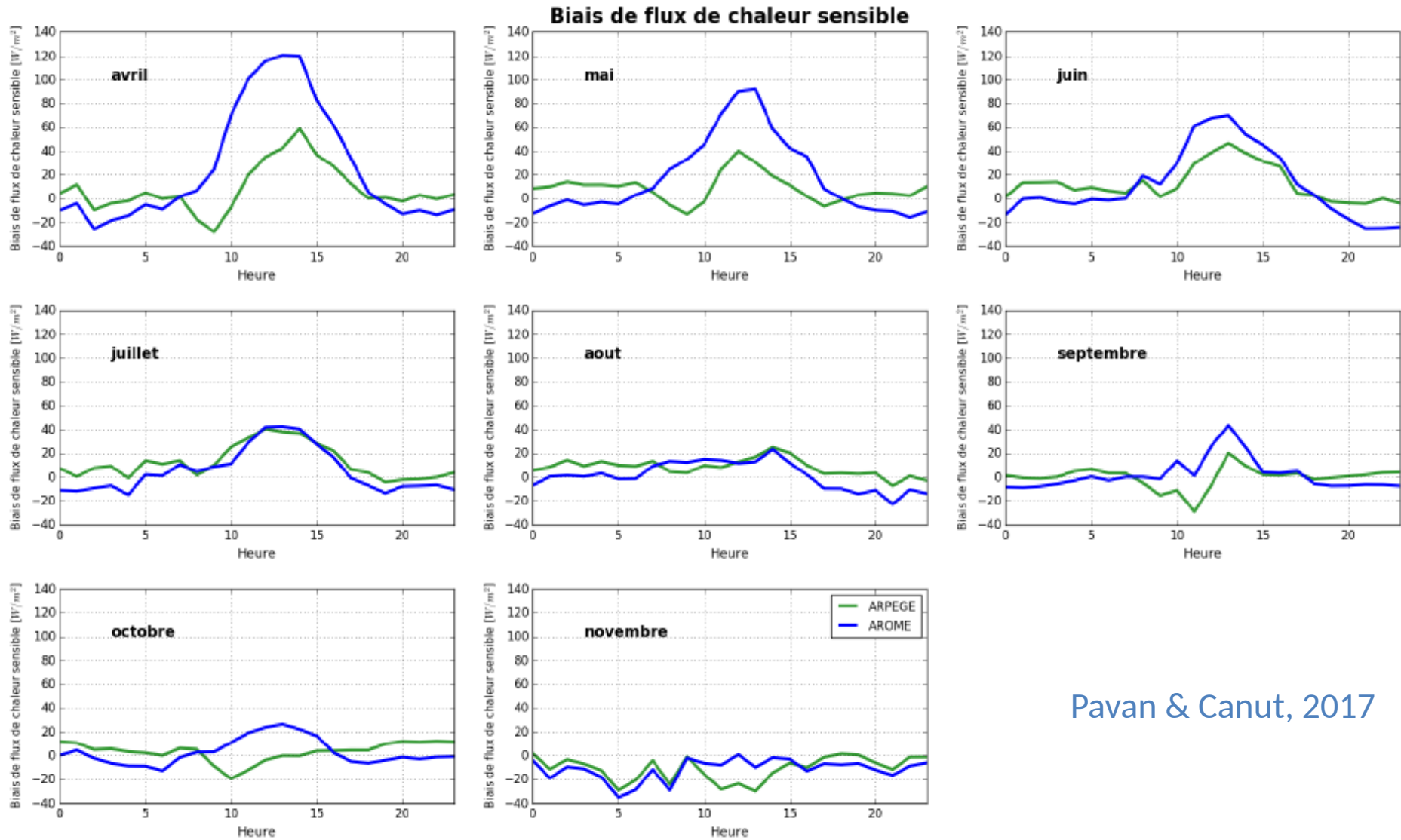
Réseaux ICOS-ecosystem

Réseaux ACTRIS-FR



□ Start of systematic comparisons between long-term measurements and weather forecast (Arpege & Arome) and climate (LMDZ) models.

Motivations



Pavan & Canut, 2017

Objectives

Variability / Climatology of heat fluxes in France

Vegetal cover, large scale forcing, soil humidity,..

Surface measurements representativity

Soil conditions, surf. meteorology, fluxes.

Error bars on surface/flux measurements

Instrumentations technical questions

What method to compare long-term measurements with model output.

Link the bias to the weak parameterizations

- Bulk method adapted to flux in models
- Lewis number
- Roughness length

☐ > 5 years measurements over 15 sites.

☐ 3 field campaigns

☐ Statistical approach, Artificial intelligence / point to point, history,...

☐ Tests of different parameterizations schemes

Partners / Models

PARTNERS

➤ **Research Infrastructure ACTRIS**

Experimental sites SIRTA (PARIS), Météopole (Toulouse) and P2OA (Lannemezan)

➤ **Research Infrastructure ICOS**

15 sites in France

➤ **Research Group DEPHY**

Modeling group working on physical parameterization in models.

➤ **Other French Laboratories: IGE (Grenoble), LATMOS (Paris), ONERA (Toulouse),...**

MODELS

➤ **Arome (1.3 km)**

Météo-France forecast model

➤ **Arpège (2.5 km)**

Météo-France forecast model

➤ **LMDZ**

Climate model from LMD.

➤ **WRF**

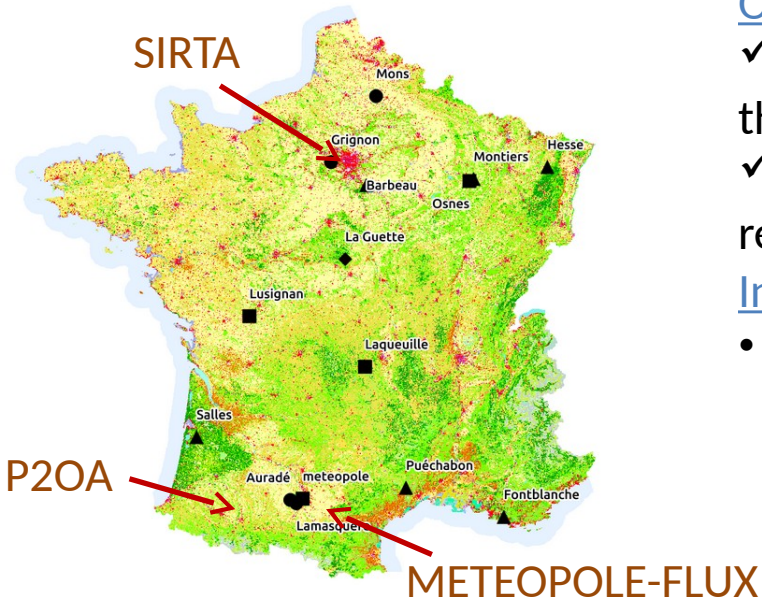
➤ **LES models**

➤ **???**

Three Experimental Campaigns

Réseaux ICOS-ecosystème

Réseaux ACTRIS-FR



1/ P2OA, Sirta & Météopole ACTRIS sites: ~ 1 year measurements (drying and moistening periods, stable conditions)

Objectives

- ✓ Accuracy of the measurements : Saisonnal variation of the surface energy balance closure
- ✓ Surface heterogeneity : measurement horizontal representativity

Instruments:

- network of SEB and meteo surface stations

2/ P2OA : Intensive Observation Period

Additional Objectives

- ✓ Roughness length heterogeneity
- ✓ Soil humidity and temperature (satellites)

Instruments:

- scintillometers, UAV, aircraft.

Scheduling

- Meeting with all partners: 29 May 2018
- Applications for french fundings: September 2018
- Field Campaigns : 2019-2021